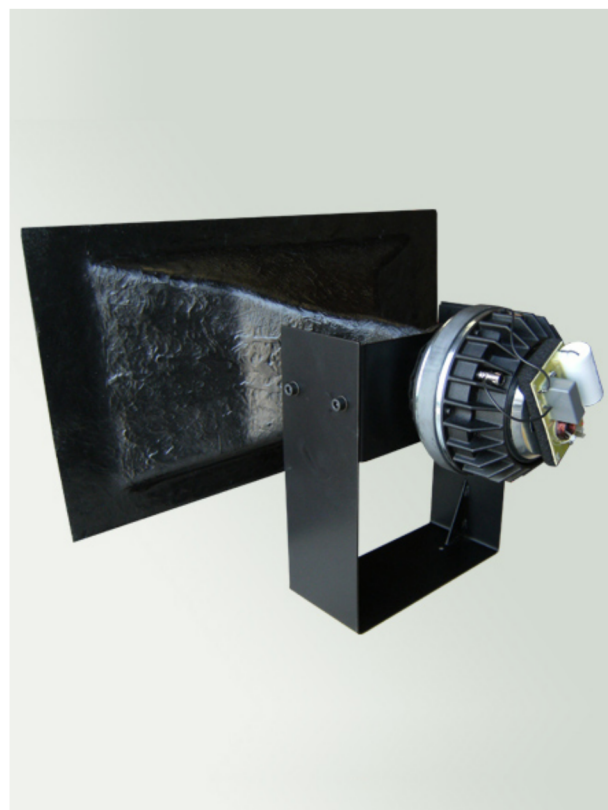


LW 4003 KIT

BASS:	
TREBLE:	COAXIAL driver 1 x 1,75" high range + 3,5" middle range
HORN:	Flat front constant directivity polyester horn 90°x40° LW3001HFD with pan/tilt adjustment
POWER:	80 + 150 W AES, 450 + 1000 W peak.
SENSITIVITY:	119dB/1W/1m. SPL 142,3dB
FREQUENCY RESPONSE:	300 to 22.000 Hz. Crossover included in the driver. Use an external crossover from 500 to 800 Hz.
SIZE:	44,1 x 66 x 42,6 cm.
WEIGHT:	22 Kg.



With the conversion to digital cinema in mind, this Kit turns any already installed two way system into a 3 way system (if the bass enclosure is in good condition).

The COAXIAL driver, with internal crossover, eliminates cancellations and gives uniform high frequency response. The result is a coherent wave in the human voice play back and a superb clarity in the sound.

